

AB AEB AML H?IK L<KB EG EG?HKF: MBHG

Ma l ab aeb arh h ghrrtg en eena tg hkf rthg g rh nl I F MK =
?HK EG <MBHG I e g ntb e L nœi k l kb tg tg hkf rthg hk
I F MK = ?HK EG <MBHG

P: KGB L: G= I K <: NMBH GL

I F MK = hktgc rthg%hk Brrk o ghnl NI
Brrk eNL : ii ktho œ))-

EG=B: MBH GL: G= NL:

: =O KL K : <MBH GL

=HL: : G=: =F EG&MK: MBHG

Mh k i hknLNL I <M =: =O KL K : <MBH GL%hgm mF bœ e
l a kf nrb œ B m' 1-- 1 - 1- / hk?=: m' 1)) ?=: *)11 hk
p p p hof p ma

=KN EGM K: <MBH GL

=HL: ?HKFL: G= LMK G MAL

<HGMK: EG=B: MBH GL

?NEE I K L < KB EG EG?HKF: MBHG3 < HGM GML

* EG=B: MBHGL: G=NL:

=HL: : G=: =F EGBLMK: MBHG

0 =KN EGM K: <MBHGL

1 NL EBLI <EB IHI NE MBHGL

, =HL: ?HKFL: G= LMK G MAL

- <HGMK: EG=B: MBHGL

. P: KEG L: G= I K <: NMBHGL

*) HO K=HL:

** = L < KB MBHG

* <EGG: E I A KF: <HEH R

*, GHG < EGG: EMH BHEH R

*- <EGG: ELMN=BL

*, K ? K G < L

*/ AHP LNI I EB=(LMHK: : G= A: G=EGG

*0 I: MB GM < HNGL EGG EG?HKF: MBHG

/ : =O KL K : <MBHGL

?NEE I K L < KB EG EG?HKF: MBIG

* EG=B: MBHGL : G= NL:

** Ghg Ljn f hnl Ghg Lf æ< æEng < g k GL<E<

.

.

.

.

* F I hra ðhf

=HL: : G=: =F EGB.MK: MBIG

* K hf f g =hl hkGhg Ljn f hnl GL<E<

.

.

.

/ =hl Fh bb rthgl hk: o k K rthgl

.
.
.

—

M e *3K hf f g =hl Fh bb rthgl hk: o k K rthgl

Mhqb lbn lg Fhl nK gmMk ni gm<r e	I f rk q hkBc rthg =hl Fh bb rthg hkG qm<r e
Fr dhl ni i k l l b rthqb lbn	
— _g_	
Ghg a f rth b rthqb lbn	
—	

- .
- .
- .
- .
- .
- .

, =HL: ?HKFL: G= LMK G MAL

- <HGMK: ~~B~~=B: NMBGL

. P: K~~B~~ L: G= I K <: NMBGL

. * Fr ~~el~~niikllhg g ~~B~~ k l K~~b~~dh Fr ~~el~~niikllhg p~~rahnn~~O~~bnf~~ ~~tg~~ Lnie f gm~~r~~hg

. K g e? tæk

. , nēnl g q hē rō Ldgy Mhqb lōn

. - BjmK rōb el g nf hglōb

. . K b rōhg K ē

. / Bj k l K b d h Mhqb lōn p lōa B ni kh g lō l rō grh p lōa K g eB i tōf gm

. 0 f k r h ? mēMhqb lōn

/ := 0 KL K : <MBIGL

.
. .
. .
. .
. .

/ * <egb eMk é qi kb g



M e 3: o K K rñgl H nkkg lq) h l rñ grh lq D RGHM *12

	l f rk q l f khðnf lertgnf <a fhra kir g6-).	le h l f rk q lertgnf <a fhra kir g6)
: o K K rñgl	: æ k l k , -	: æ k l k , -
l rñgrm l rñg e=b hk k		
g k e=b hk k g : f lq b rk rñgl Løn <hg lñgl		
F m hð f g Gnrtñgl =b hk k		

M e . 3: o K K rñgl H nkkg lg . h l rñgrh K lðlg l f rk q lg Lm r CF G

: o K K rñgl	l f rk q G6-,1		l e h G6 *1	
	: æ k l	k , -	: æ k l	k , -
: æ o K k rñgl				
E hk rñkr				
A f rñh b				
A i rñ				
< ðgb e				
< hgl rñrñgl el r f i rñf l				
l rñhlgml rñg e				
Þg rñgl				
G nkhñ r				
= kf rñhñ r(L ðlg)				

Þg b g * rñ 5.

Bj b g 5*

M e / 3

E h k r h k r				
A f r h e b				
A i r b				
< e g b e				
I r h t g m l r t g e				
< h g l r b n t h g e l r f i r h f l				
= k f r h e r (L d t g)				

B g b g * r h 5.

B g b g 5*

M e 13: o K K rthgl H nkktg t. h ?næ Lnief gm Ln khni h l rthgrh K lthg
 l f rth q (<thiertg t Lm r CF < A

: o K K rthg	l f rth q (thiertg G6*/1		<thiertg G6*/,	
	: æ k l	k , -	: æ k l	k , -
E hk rthk				
A f rth b				
K g e				
<thg b e				
r = thhk k				
l rthgl rthg e				
<thgl rthg e L r f i rth l				
F m th f g Gnrthg				
G nrth r				

= k f r h n r (L d t g)				

Bj b g * r h 5.

Bj b g 5*

.

/ I hl nī kd rō qī kō g

0 =KN EGM K: <MBIGL

.

.

1 NL EGLI <PB I HINE MBIGL

1* I k g g r

1 E mrtng

1, ? f el g F el h K i k h n rto l hmgrto e

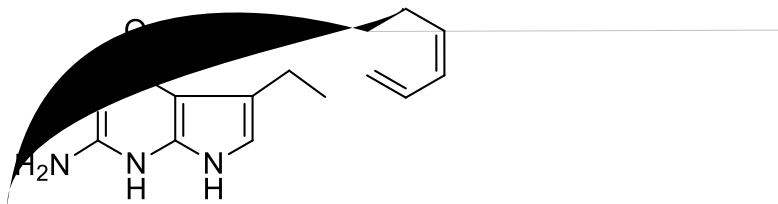
1- I b rto NI

1. kb rto NI

1 / I rto grh p lra K g eB i kf gm

10 HO K=HL:

11 = L<KB MBIG



* <EGB: EI A: KF: <HEH R

* * F a g l f h : r t h g

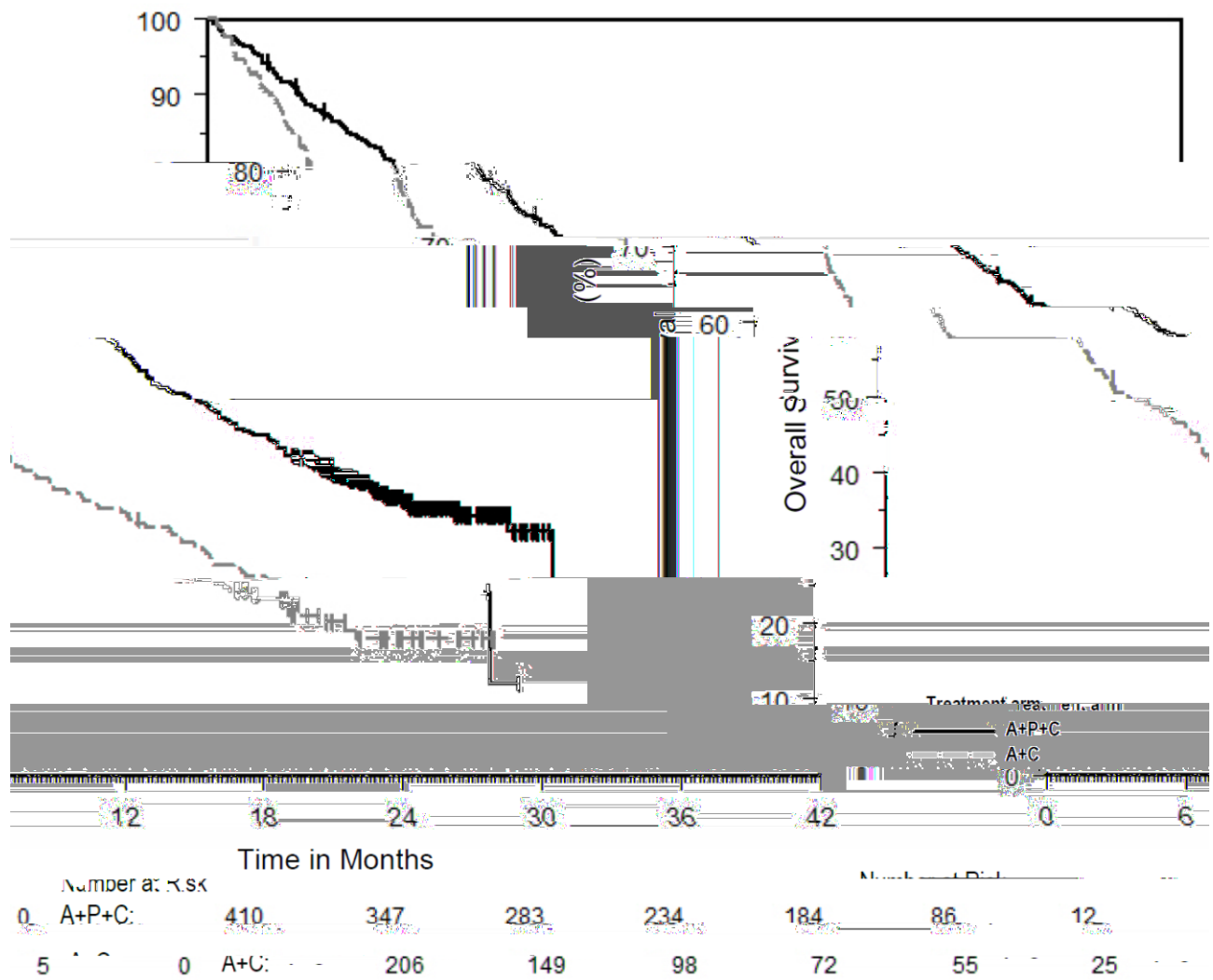
***, GHG<EGB: EMH BHEH R**

***, * < k lgh g l b %F nm g l b %B i bf grh ? k r b n**

M e *)3 b r K l n e h h D R G H M *12

g i h t g m	l f r k q l f k h o n f l e r t g n f < a f h n a k i r g 6 - *)	l e h l f r k q l e r t g n f < a f h n a k i r g 6) /
HL		
I ? L		

HKK

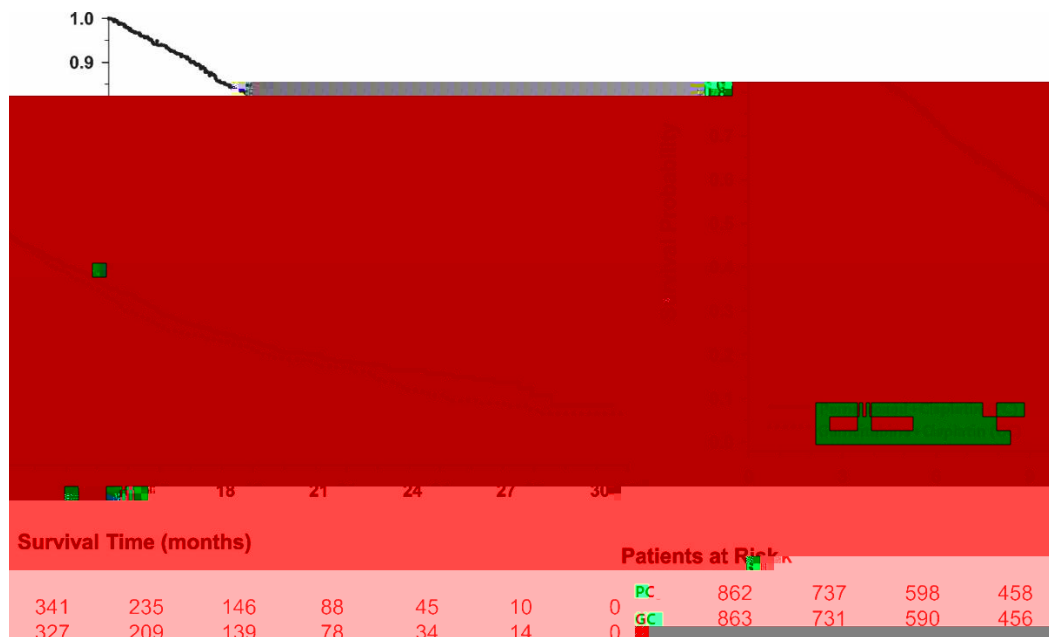


?b nk *3D i eg F bk<nk hkHo k æLnk b eg D RGHM *12

*

M e **3 b r K l n e h t y L m r C F =

b r l k f m k	l f m q i e n l < b i e n t y G61/	f l n t y i e n l < b i e n t y G61/,
H o k æ L n k o l o e		
I k h k l l b g ? k L n k o l o e		
H o k æ K l i h g l K m		



?b n k 3D i e g F b k < n k o l h k H o k æ L n k o l o e t y L m r C F =

M e * 3Ho k æLnkøø etg GL<E< Ab r h e b Ln khni l t g L m r CF =

Ab r h e b Ln khni l	l f r h q i e l < b i e r t g G61/	f l n t g i e l < b i e r t g G61/,
Gh g l j n f h n l GL<E< G6*%.		

?b nk , 3D i e g F b k < n k o I h k H o k æ L n k o e t g G h g l j n f h n l G L < E < t g L m r C F =

?b nk - 3D i e g F b k < n k o I h k H o k æ L n k o e t g L j n f h n l G L < E < t g L m r C F =

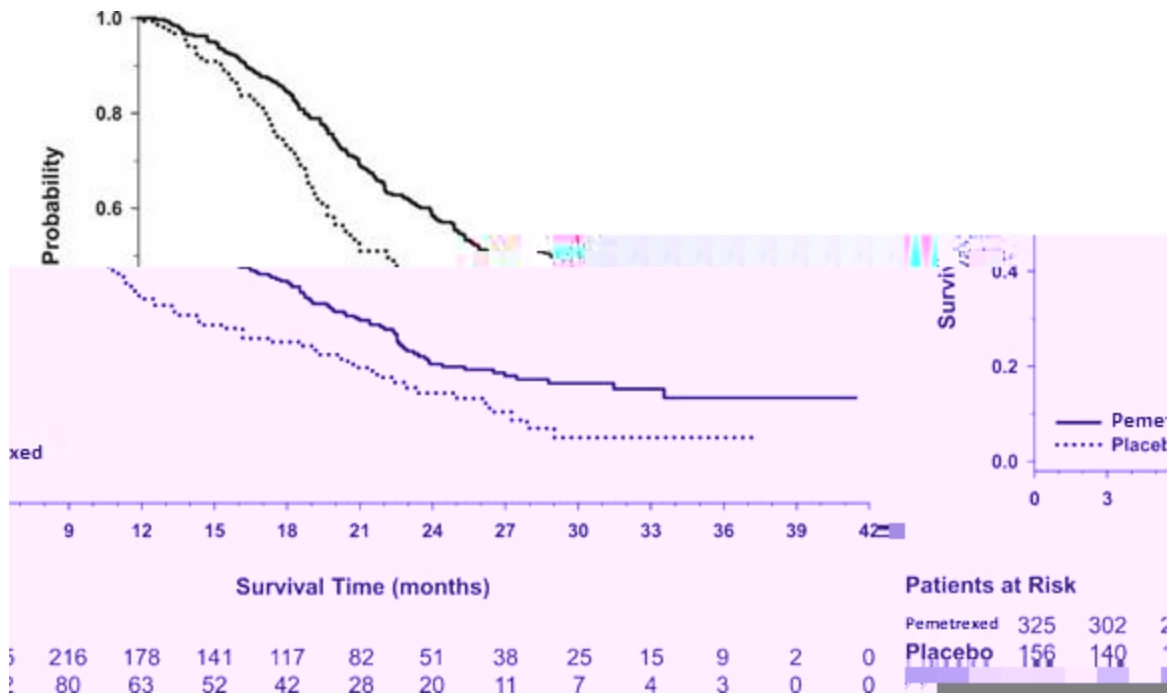
M e *, 3 b r K l n e h t g L m r C F G

b r l k f m k	l f r k q	l e h
H o k æ l n k o l o e		
l k h k l l t h g k l n k o l o e i k t g i g g r k o b p		

?b nk .3D i eg F bk<nko l hkHo k æLnkoð etg Lm r CF G

M e *-3 b r K lneh tglm r CF G r Ab r h e b Ln khni

	Ho k æLnkoð e		l kh k l l ðng ?k Lnkoð el k Ej i g grK obp	
b r l k f mk	l f r k q G6--*	l e h G6	l f r k q G6,10	l e h G6*2-
Ghg l j n f hnl GL<E< g6-1*				



?bnk /3D i eg F bk<nko l hkHo k eLnkolo ely Ghgl j n f hnl GL<E< kg Lm r CF G

?b nk 03

I kh k l l t h g k l n k o l o e	

M e * / 3 b r K l n e h t y L m r C F B

b r l k f m k	l f r k q G6 1,	=h m q e G6 11
Ho k æ l n k o e		
l k h k l l i n g k l n k o e		
Ho k æ k l i n g l k m		

M e * 0 3 q i e k r h k b r : g e l l r A b r h e b L n k n i t y L m r C F B

A b r h e b L n k n i l	l f r k q G6 1,	=h m q e G6 11
G h g l j n f h n l G L < E < G 6 , 2 2		

Ljn f hnl GL<E< G6*0	

*- F l h r a d h f

M e *13 b r K l n e h t g L m r C F < A

b r l k f m k	: æK g h f b g M k m l r b g r h G6 - 1		?næ L n i e f g m l r b g r h G6, *	
	l f r k q (<b i e r t g G6 /	<b i e r t g G6	l f r k q (<b i e r t g G6*/1	<b i e r t g G6*/,

?b nk 23D i eg F bk<nk l hkHo k æLnkø elg Lm r CF <A

Lmke %Ghgi r kh gb% k l ko nto k

Ma hgmty k el nk b ghmf pla g mk ekn ke mq

*0 I: MB GM<HNGL EGG EG?HKF: MBIG



I: MB GMB?HKF: MBIG

I f rk q i f MK hkBc rthg%NLl
hkBk o ghnl NI

